

## HANDLING AND STORAGE SYSTEMS FOR BIG BAGS / FIBC'S

The Indus Neva Big Bag Handling and Storage System is a unique system for easy filling, safe internal and external transport, efficient stacked storage and easy discharge (with a dosage and cut off possibility through the slide) of solids packed in Big Bags / FIBC's.

The Indus Neva System consists of a robust bowl shaped bottom part with a slide in the center for (dosed) discharge and 4 steel poles with special plastic feet and heads for fixing the Big Bag and for safe stacking / racking of the systems.



Filling



Safe internal and



External transport



Efficient stacked storage (max. 4 high x 1.500 kg.)

## IMPROVING YOUR BULK STORAGE AND LOGISTICS



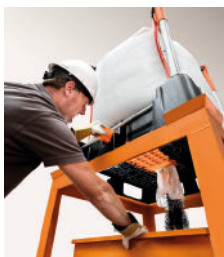
The complete Indus Neva System



The deck with a closed slide in the Indus Neva



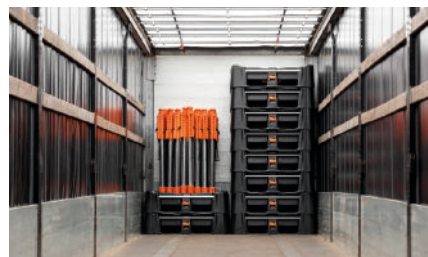
The deck with an open slide in the Indus Neva



Manual Discharging



Seamless integration



Easy return transportation



Minimal volume if not in use

## DIMENSIONS

The Indus Neva System is best suited for Big Bags /FIBC's with a minimum height of 40 cm. (16") and a maximum height of 230 cm. (90"). The length and width of the Big Bag / FIBC should preferably lie around the 95 x 95 cm. (37" x 37") (based on the buying specification of the Big Bag).

## THE SMART WAY TO HANDLE BIGBAGS IN YOUR ENTIRE SUPPLY CHAIN.

## TYPES OF HEADS FOR THE STACKING POLES



### The Springhead

The springhead is developed for customers who want to use the system for filling, transport, stacked storage and discharging. (the complete package of possibilities). Due to the force of the spring it is difficult to fixate the lifting loops of already filled Big Bags for further handling and discharging.

### The Lockhead

The lockhead is mainly suited for customers who want to place already filled Big Bags in the system and use the system for further transport, handling, stacked storage and discharging. This type of head is also advised for the handling of Big Bags with short lifting loops.



**H** = Total system height  
= Big bag height (buying specification) + 35cm (14").

*This can vary slightly depending on the length of*

## NEVA PRODUCT SPECIFICATIONS

### Deck Material Indus Neva

Polypropylene, 30 kg.

### Material other plastic parts

Polypropylene / Polyamide

### Material stacking/fixation poles

Galvanized Steel (optional Stainless Steel, Type 304)

### Weight Indus Neva system complete

50 kg. for Big Bags of 95x95x105 cm.

### Weight Indus Neva system complete

56 kg. for Big Bags of 95x95x160 cm.

### Weight Indus Neva system complete

60 kg. for Big Bags of 95x95x200 cm.

### Maximum load capacity Indus Neva

1.500 kg. per piece

### Maximum load capacity Indus Neva with 2 open sides

1.000 kg. per piece

### Maximum load capacity Indus Neva stacked

4 high x 1.500 kg or up to seven meters high.

### Operating temperature range for the Neva System

-10°C to + 40°C

### Tested and certified by

IBE-BVI, Sebert

[WWW.INDUS-BULKLOGISTICS.COM](http://WWW.INDUS-BULKLOGISTICS.COM)

Botter 8 | 2411 NM, Bodegraven | The Netherlands  
+31(0)172 72 71 69 | [info@indus-bulklogistics.com](mailto:info@indus-bulklogistics.com)